



8800B / GD40B

DryBlend Youth Polo



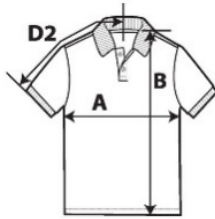
DETAILS

Fabric
Yarn Count
Features

50% Polyester, 50% US Cotton, 203.0 G/SqM (White 193.0 G/SqM)
18/1
DryBlend's moisture-wicking fabric delivers both comfort and coolness.
A decorator's favorite for work wear and uniforms.
Proud member of the US Cotton Trust Protocol (USCTP).
Cotton products from Gildan support more sustainable + ethical cotton farming.
Companion style: 8800
Midweight fabric with DryBlend® technology
Contoured welt collar and cuffs
Clean finished placket with dyed-to-match buttons
Classic fit, tubular body
High-performing tear-away label
CPSIA Tracking Label Compliant
Guatemala, Honduras

Country of Origin
Case Packs
Colours
SKU's

S - XL 36 PIECES
7
28



SPECIFICATIONS

| Centimeters | Tol- | Tol+ | S | M | L | XL |
|----------------------------------|-------|-------|--------|--------|--------|--------|
| Chest (A) | 2.540 | 2.540 | 40.640 | 43.180 | 45.720 | 48.260 |
| Length from HPS (B) | 2.540 | 2.540 | 49.530 | 54.610 | 59.690 | 64.770 |
| Sleeve length (Center back) (D2) | 1.905 | 1.905 | 36.830 | 38.100 | 40.640 | 41.910 |

| Inches | Tol- | Tol+ | S | M | L | XL |
|----------------------------------|-------|-------|--------|--------|--------|--------|
| Chest (A) | 1.000 | 1.000 | 16.000 | 17.000 | 18.000 | 19.000 |
| Length from HPS (B) | 1.000 | 1.000 | 19.500 | 21.500 | 23.500 | 25.500 |
| Sleeve length (Center back) (D2) | 0.750 | 0.750 | 14.500 | 15.000 | 16.000 | 16.500 |

COLOURS

Black
Navy
Purple
Red
Royal
Sport Grey
White

| Code | Colour Chip | Sizes | Comments |
|------|-------------|-------|----------|
| 036 | | S-XL | |
| 032 | | S-XL | |
| 081 | | S-XL | |
| 040 | | S-XL | |
| 051 | | S-XL | |
| 095 | | S-XL | |
| 030 | | S-XL | |

CHANGES

Total Net Change 0 SKU's