

## PR258 Men's Banded Collar 'Grandad' Shirt

### Description

This iconic shirt is a welcome addition to our Hospitalitywear collection and is a popular style worn at the front-of-house. The distinctive collar features a narrow banded fabric strip that runs around the neck and fastens at the front with a top button. Double buttons to the cuff and a sleeve guard allows for a more casual roll-back option on the arm. Styled to be unisex so everyone can introduce this trendy yet timeless piece into their teamwear.

### Product Features:

- Classic banded 'Grandad' collar with top button fastening.
- Double button cuff and sleeve guard.
- Pearlised buttons
- Back yoke and pleats

### Available In:

XS, S, M, L, XL, 2XL, 3XL

### Certifications:

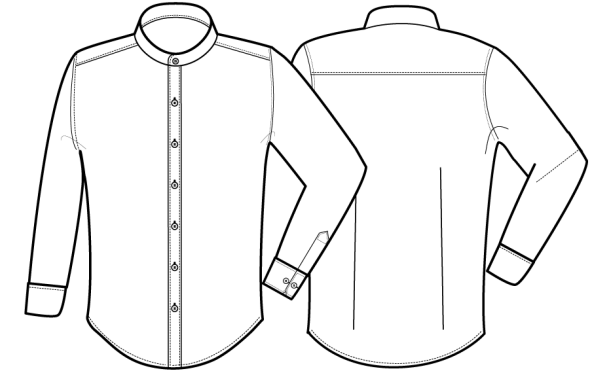


### Colours:

| Colour | Pantone | C | M | Y | K |
|--------|---------|---|---|---|---|
| White  | White   | 0 | 0 | 0 | 0 |

### Fabric:

65% Polyester, 35% Cotton Poplin, 115gsm.



### Suggested Decoration:

Screen Print, Transfer Print, Embroidery

### Country of Origin:

Bangladesh

### Commodity Code:

6205300000

### Features:



### Wash Care:



### Carton Information:

| Sizes     | Carton | Pack | SKU's | Carton Weight | Carton Dimensions  |
|-----------|--------|------|-------|---------------|--------------------|
| All Sizes | 24     | 6    | 7     | 9.5kg approx  | 60cm x 40cm x 50cm |

### Garment Sizes:

| Call size       | XS   | S    | M    | L    | XL   | 2XL  | 3XL  |
|-----------------|------|------|------|------|------|------|------|
| Collar cm       | 38.5 | 40.5 | 42.5 | 44.5 | 46.5 | 48.5 | 50.5 |
| Chest to fit"   | 30   | 34   | 38   | 42   | 46   | 50   | 54   |
| Chest to fit cm | 77   | 87   | 96   | 107  | 117  | 126  | 136  |
| Chest actual cm | 94   | 104  | 114  | 124  | 134  | 144  | 154  |
| Back length cm  | 74   | 76   | 78   | 80   | 80   | 82   | 84   |