



WOMEN HOODIE SWEATSHIRTS  
**STELLA BOWER**



STSW132

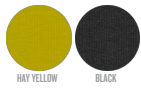
**The women's cropped hoodie sweatshirt**

Brushed Sweatshirt

85% Organic ring-spun combed cotton, 15% Recycled polyester  
300 GSM

- Raglan sleeve
- Lined hood in single jersey
- Inside herringbone back neck tape
- Self fabric half moon at back neck
- Single needle topstitch at neckline and bottom hem
- 1x1 rib at sleeve hem with twin needle topstitch
- Round drawcords at bottom hem in matching body colour with metal tipping
- Metal eyelets

COLORS



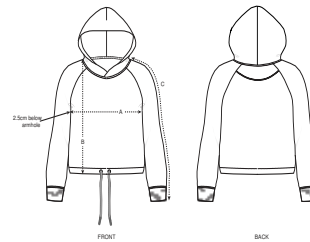
ESSENTIAL  
HEATHERS



RELAXED FIT

	XS	S	M	L	XL
--	----	---	---	---	----

Size guide



	SIZES	XS	S	M	L	XL
A	Half Chest	50.5	53	56	59	62
B	Body Length	55	57	59	61	62
C	Sleeve Length	67.8	69	70.5	71.8	73

Printing Specifications

Fits all kinds of print techniques. Please download our printing guide for details.

**STANLEY/STELLA**

Wash similar colours together, do not iron on print, wash and iron inside out.

