



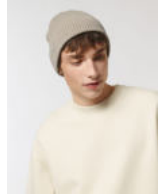
UNISEX BEANIES
STAU772- RIB BEANIE



The rib beanie

- Two layers beanie
- Four shaping seams at top
- Foldable brim

Combo options



Fisherman Beanie

WHITES



NATURAL

COLORS



BLACK DUSTY MINT STARGAZER FRENCH NAVY HIBISCUS ROSE LAVENDER OXY FALL WORKER BLUE

ESSENTIAL

HEATHERS



MID HEATHER GREY HEATHER GREY

Shell : 1x1 Full needle rib , 20% Polyester - Recycled , 80% Cotton - Organic Ring Spun Combed , Fabric washed

Printing Specifications

For suitable print techniques, please download our printing guide

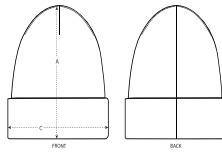
Certifications & memberships



Wash Instructions

Wash similar colours together, no ironing on print, wash and iron inside out.





SIZES		OS
A	Height	28.5
C	Width	22