



WHITES



OFF WHITE

COLORS



BLACK BRITISH KHAKI ROYAL BLUE FRENCH NAVY RED DEEP METAL FLAME ORANGE

MEN PADDED JACKET
SX174 - STANLEY CLIMBER



The men's body warmer

Fitted

- Sleeveless
- High collar
- Reverse nylon zip at center front
- Zipped welt pockets with extra grosgrain puller
- Elastic tape binding at armhole
- Fully quilted
- Side panels for better shape
- Inside bound seams
- Bottom hem with adjustable plastic stopper and elastic cord
-

Combo options



Stella Climber

Shell : Plain Weave , 100% Recycled polyester , Fluorine-free DWR , 75 GSM
 Padding : 100% Recycled polyester , 175 GSM
 Lining : Plain Weave , 100% Recycled polyester , Fluorine-free DWR , 75 GSM

Printing Specifications

For suitable print techniques, please download our printing guide

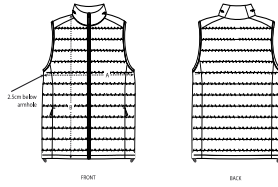
Certifications & memberships



Wash Instructions

Wash similar colours together, no ironing, wash inside out. Close all zips before washing. Tumble dry low temperature, use tennis ball for tumble dry





SIZES		S	M	L	XL	XXL	3XL
A	Half Chest	53.5	56	59.5	63	66.5	70
B	Body Length	65	68.5	70.5	72.5	74.5	76.5